

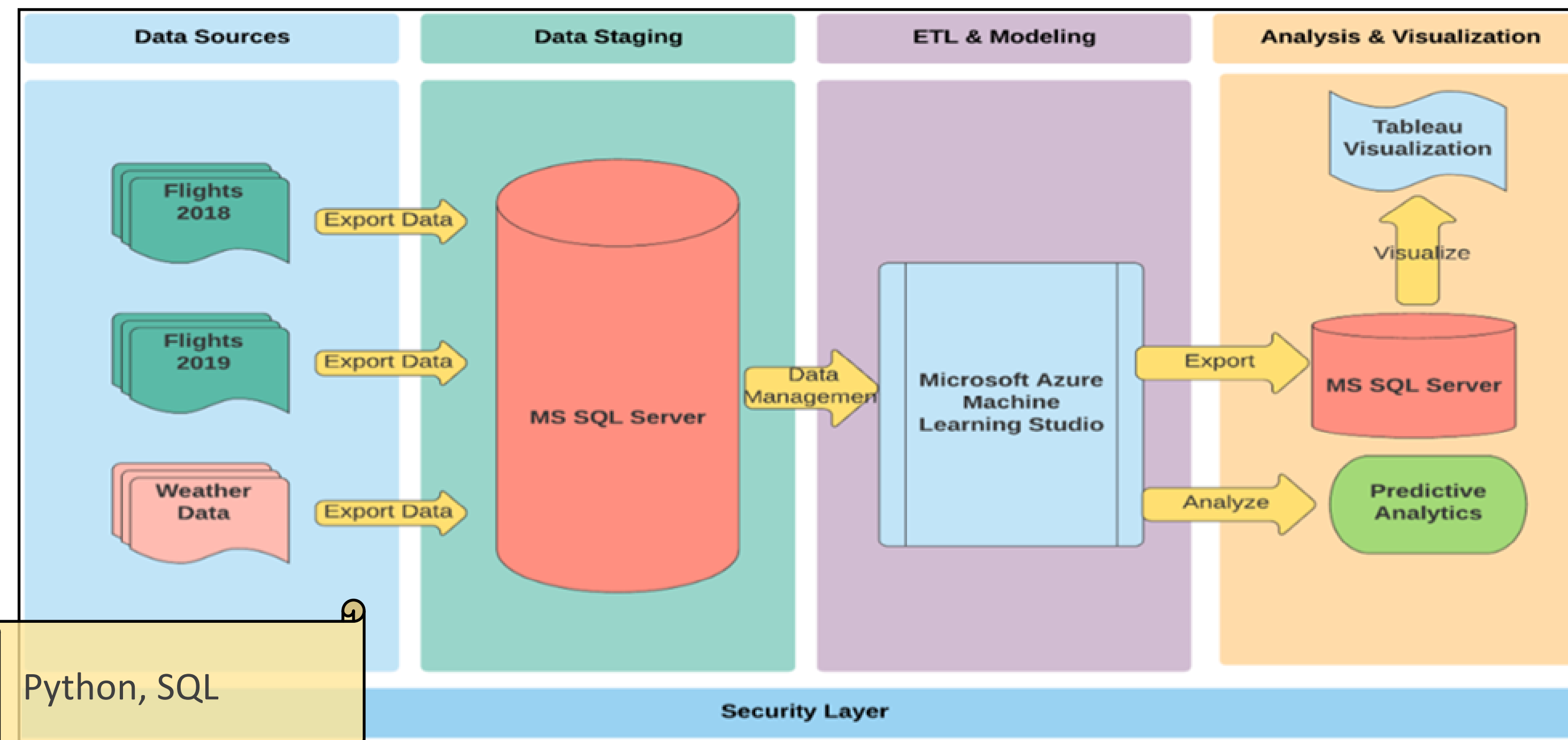


# Flight Scheduling Optimization

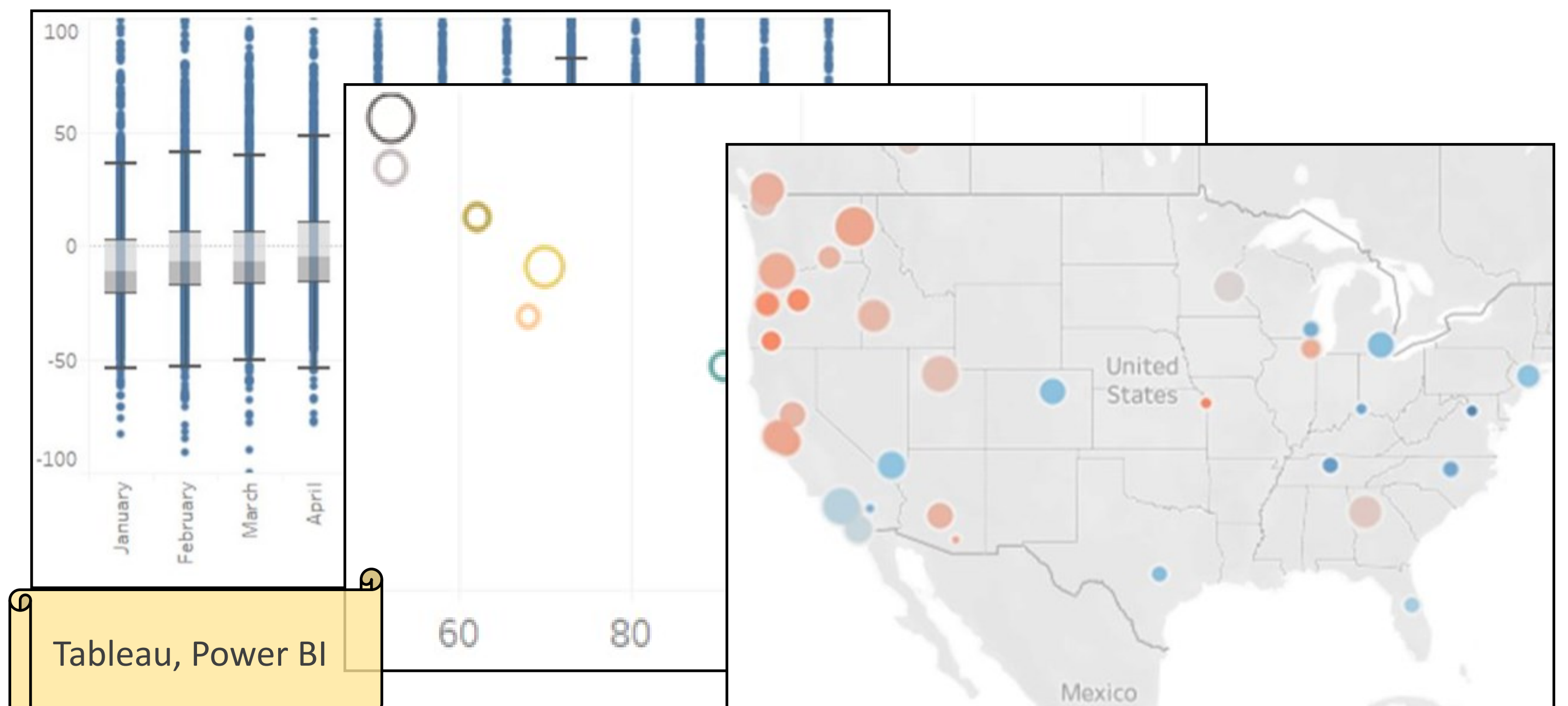


*Business Objective: Utilize analytics to optimize flight schedules through key gates at Seattle-Tacoma International Airport.*

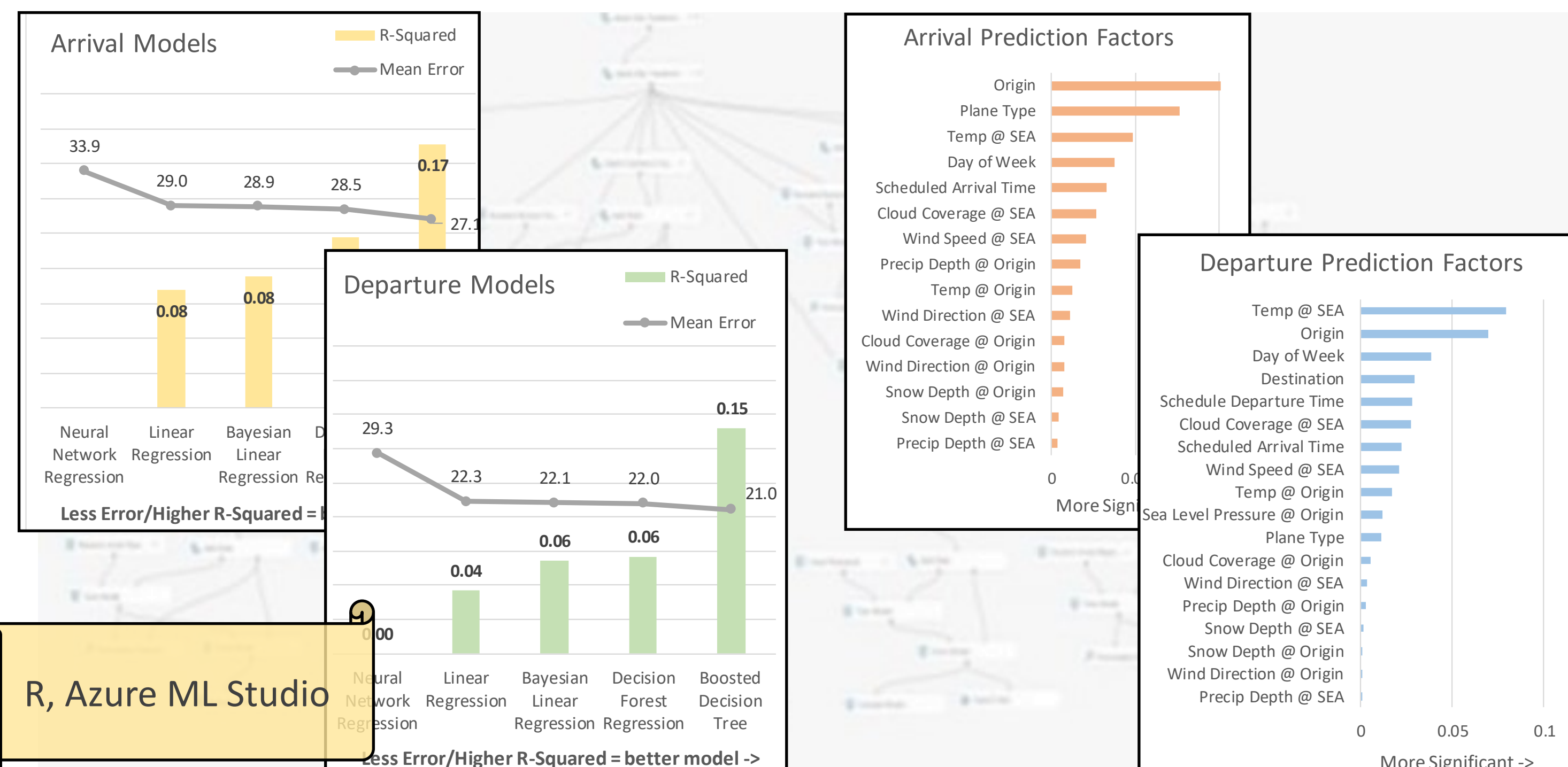
## Phase 1: Business understanding and data architecture



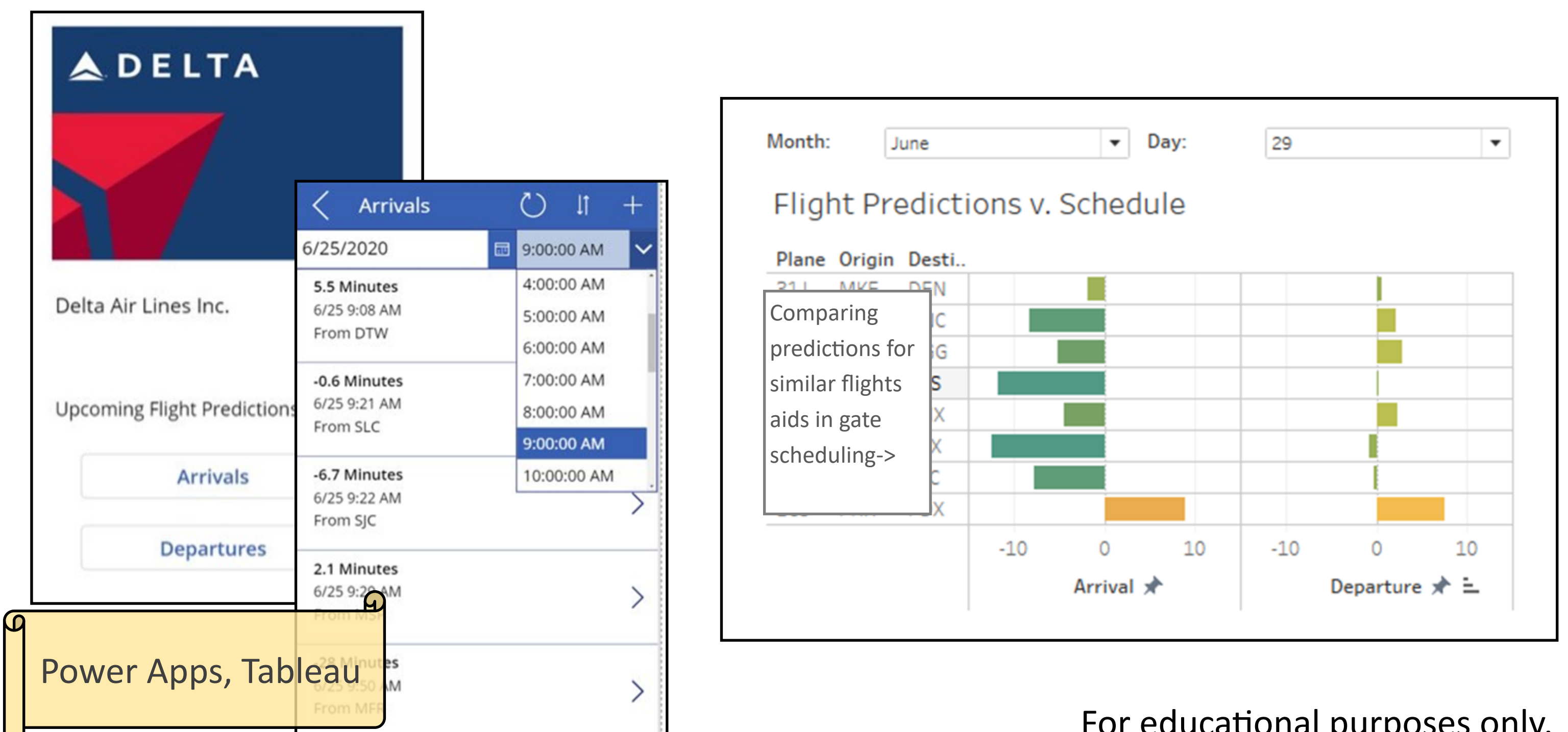
## Phase 2: Descriptive/Diagnostic Analytics - Why are flights early/late?



## Phase 3: Predictive Analytics - Predict arrival & departure schedule deviations



## Phase 4: Prescriptive & Cognitive Analytics - Web apps & scheduling tools



For educational purposes only.