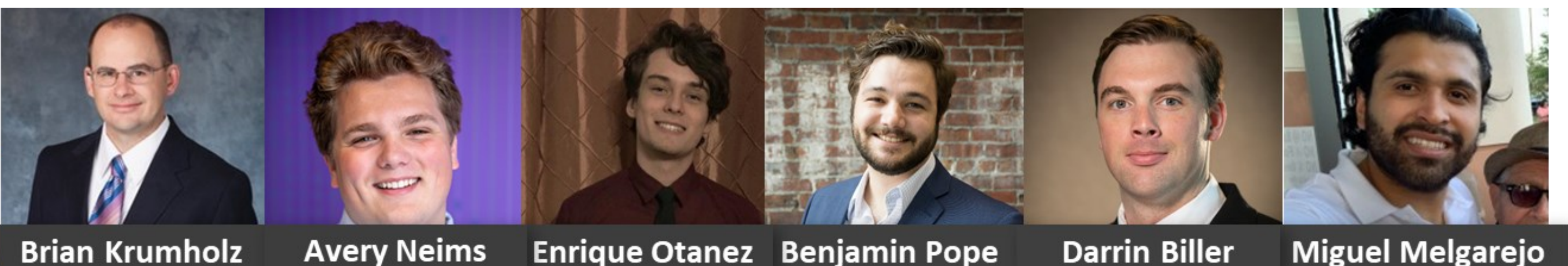


# Expansion Locator & Data Driven Decision Making



An education and advocacy organization for young children that includes a children's museum, robust outreach programming, a childcare center, and multiple preschools.

## Project Scope

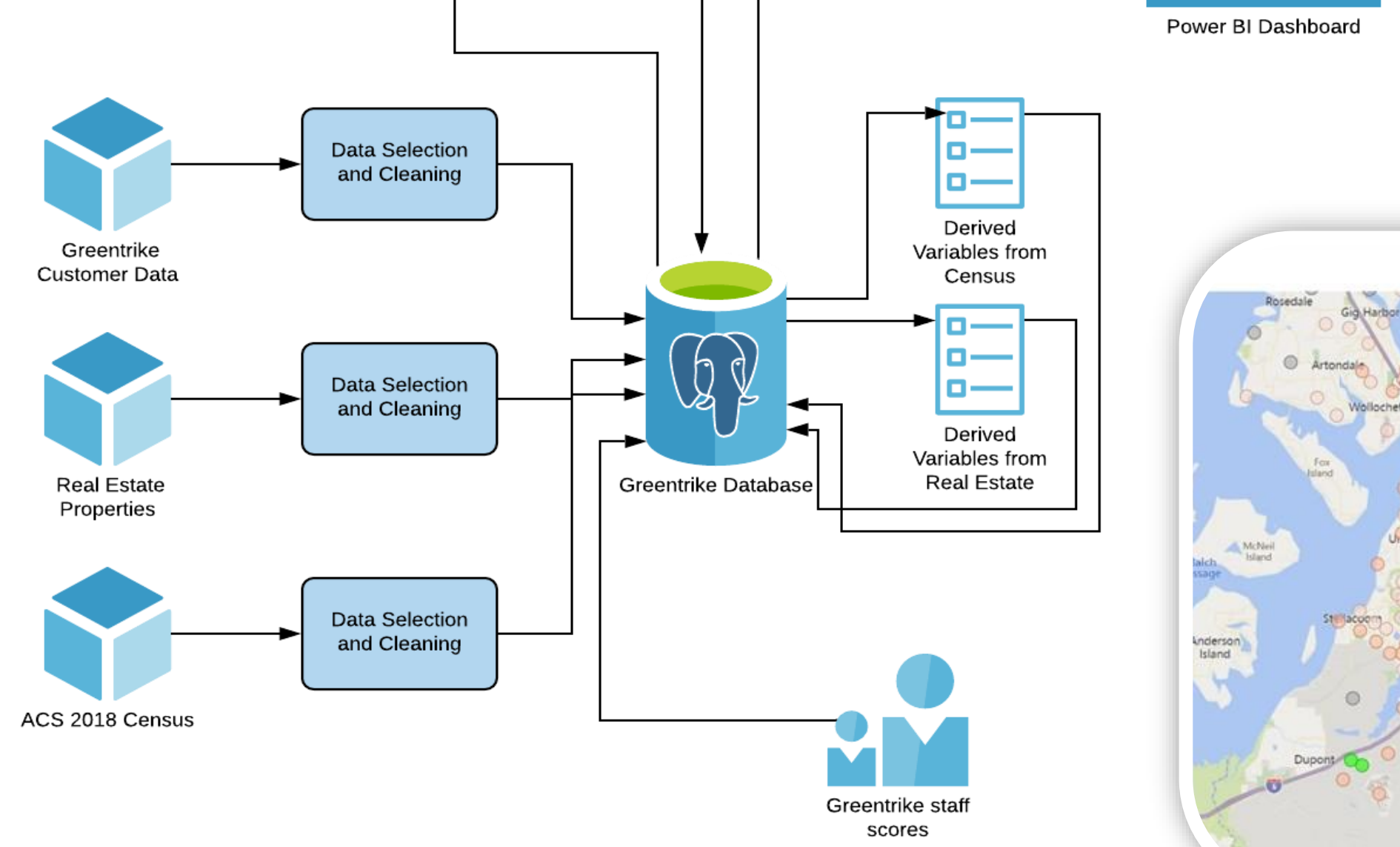
Develop a turnkey solution that Greentrike can leverage to identify and refine areas and properties for early education programs within Pierce County. The underlying model should:

- 1) Increase community access to high-quality programs
- 2) Enable Greentrike to achieve strategic and financial objectives

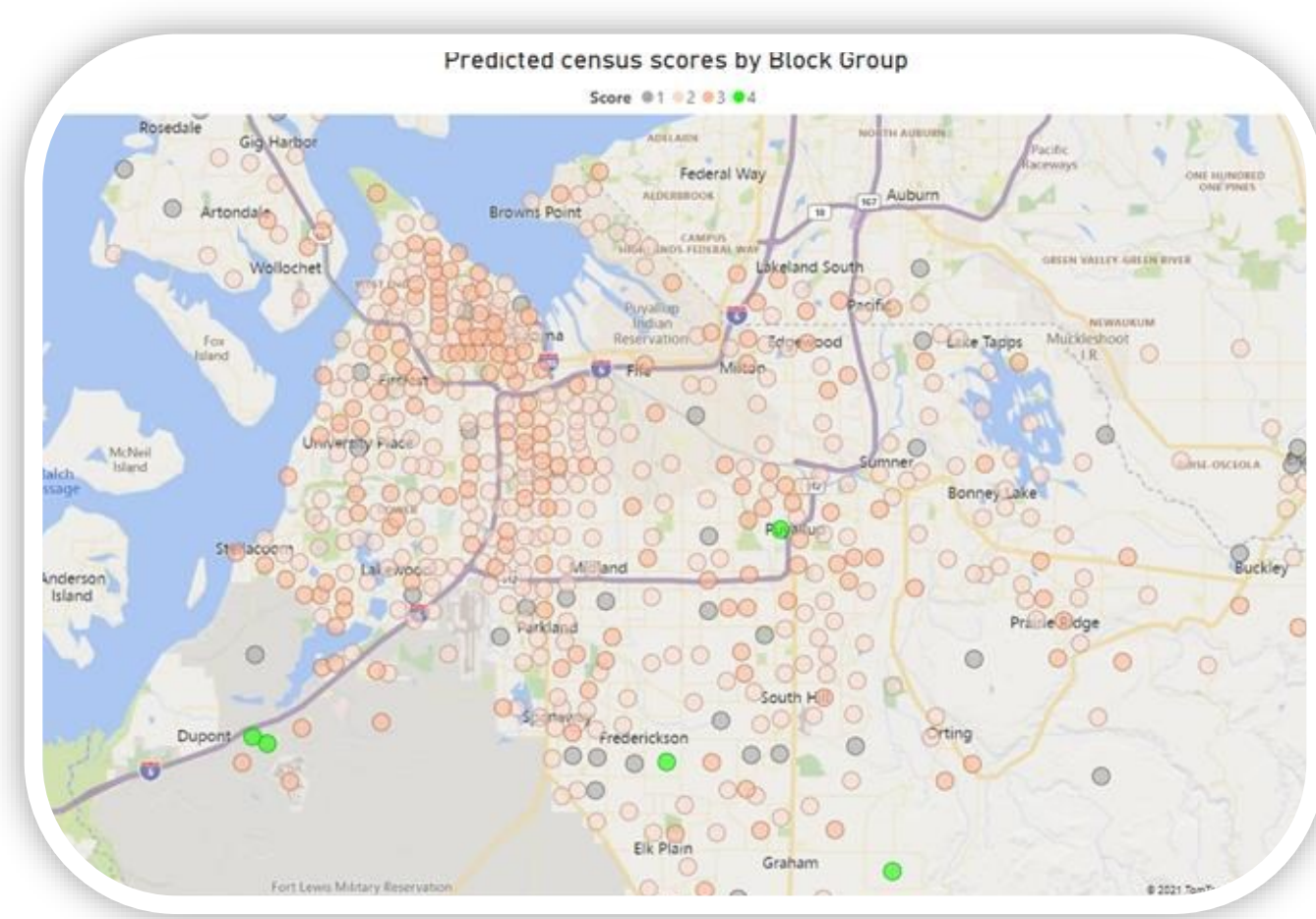
## Areas of Exploration

- GROWTH (PROGRAM EXPANSION)
- SUPPLY & DEMAND
- REGULATIONS
- INVESTMENT OPPORTUNITIES

## Data Flow

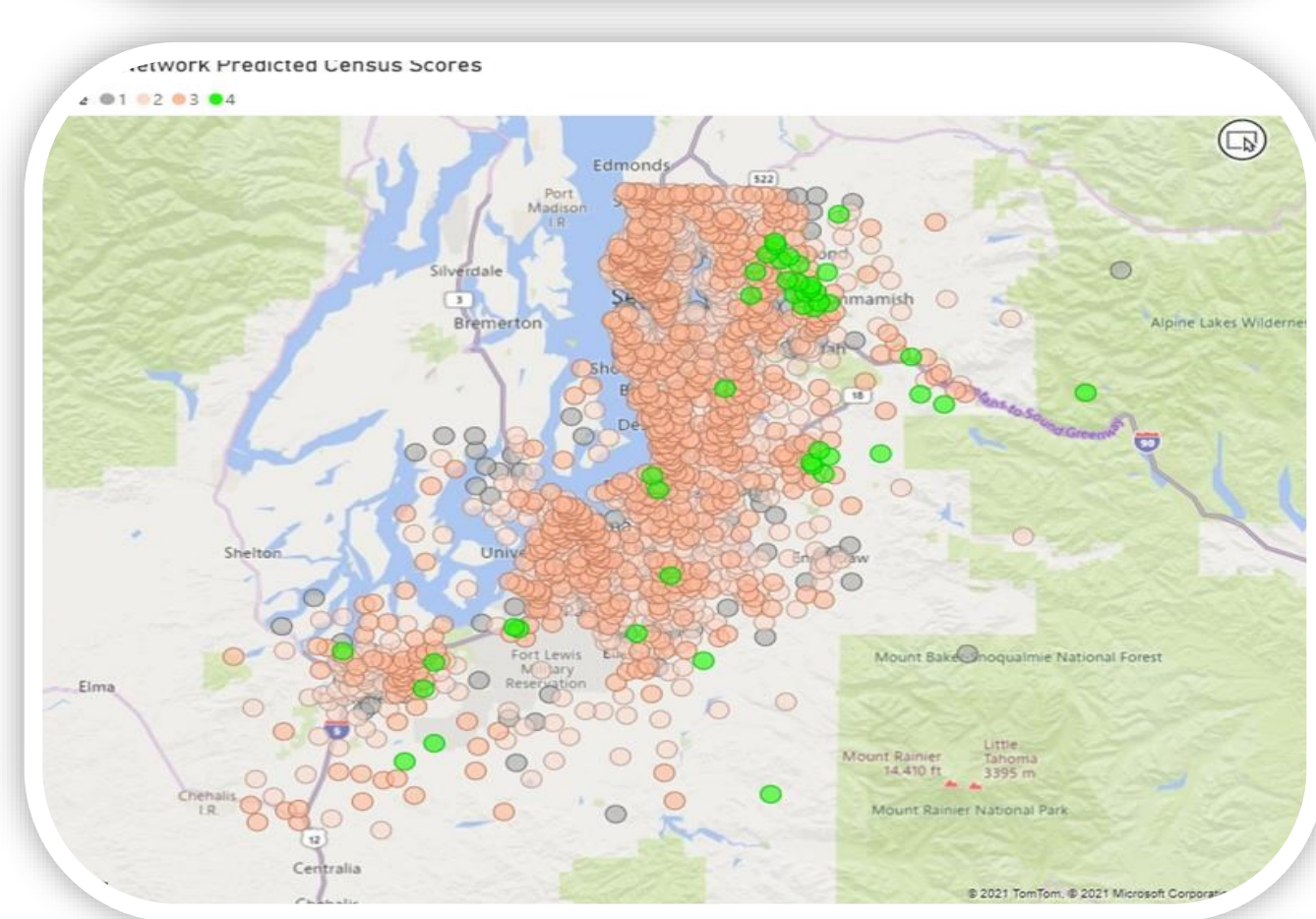
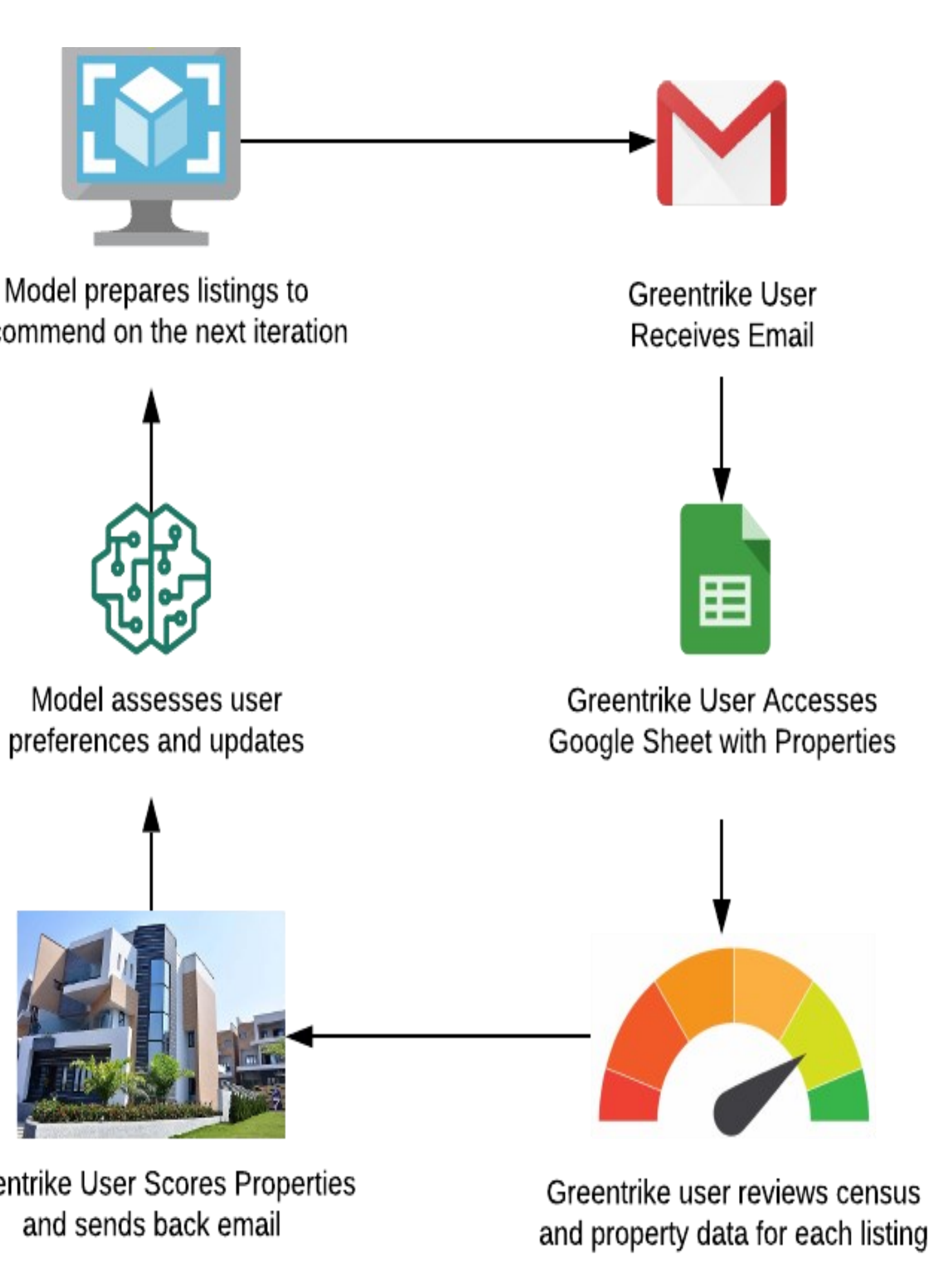


## Tech Stack | Open Source | Low Cost



Block Group ID	Population	Households: 3 Miles	Kids under 5	Kids 5 to 9	Percent Kids under 5	Percent Kids under 5 to 9	Percent Kids 5 to 9	Average Age	Household Income under 40K: 3 Mile	Household Income 40K to 50K: 3 Mile	Household Income 50K to 60K: 3 Mile	Household Income 60K to 75K: 3 Mile	Household Income 75K to 100K: 3 Mile	Household Income 100K to 125K: 3 Mile	Household Income 125K to 150K: 3 Mile	Household Income 150K to 200K: 3 Mile	Household Income 200K+: 3 Mile	Block Group Score	
53053064500	1346	8691	10537	89129	8052	28890	292	195	34.5%	41.4%	34.9%	107.3%	36.2%	25.	11.4%	11.1%	11.	11.	4.2%

## Feedback Loop

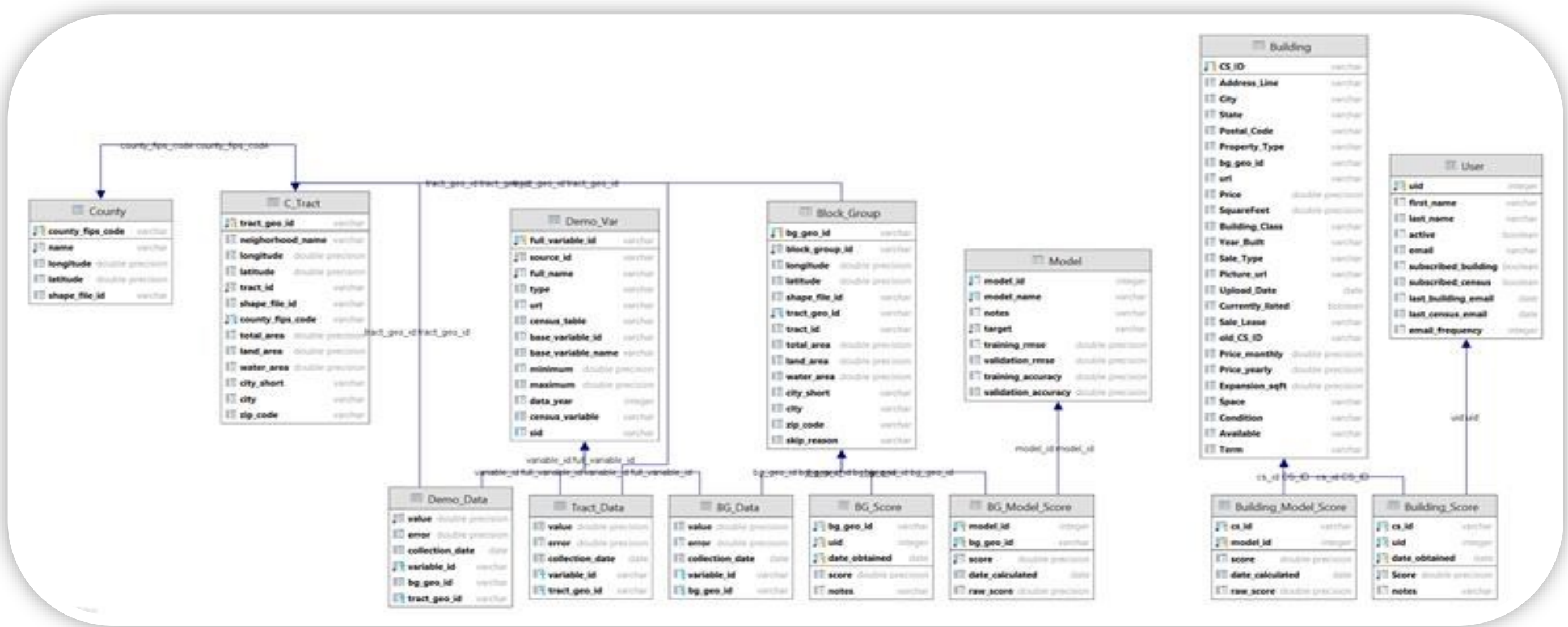


**10901 Bridgeport Way SW**  
2,850 SF | Vacant | Office Building | Lakewood, WA | \$695,000 (\$244/SF)

**PROPERTY FACTS**

Type	Owner User	Price	\$695,000	Typical Floor Slab
ty Type	Office	Price Per SF	\$244	Slab To Slab
sq ft	2,850 SF	Parent / Tenant	Vacant	Build-

## Predictive Power | Dynamic | Forced Multiplier



## Opportunities & Next Steps

