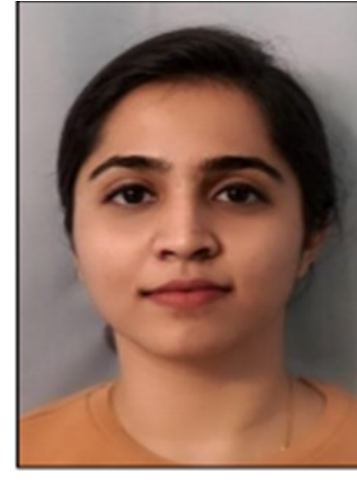


Health System Planned Telehealth Adoption Utilization Assessment

UW MSBA Team 8



Shivangi Desai



Gautami Degaonkar



Aradhana Mishra



Shreyaa Bhomkar

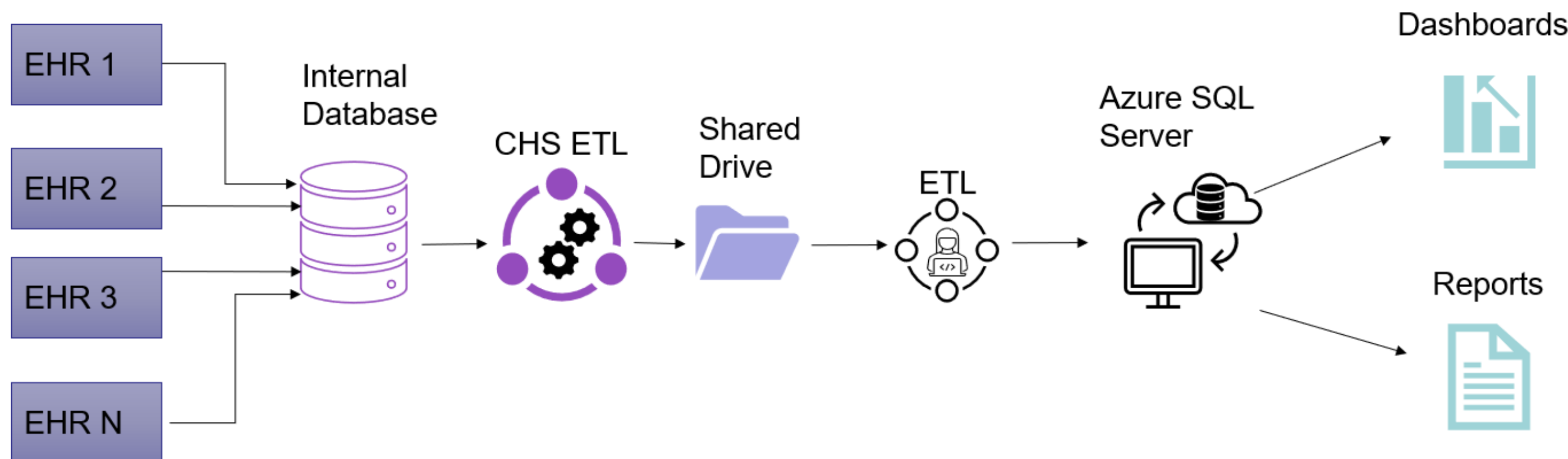


Siddhant Masson

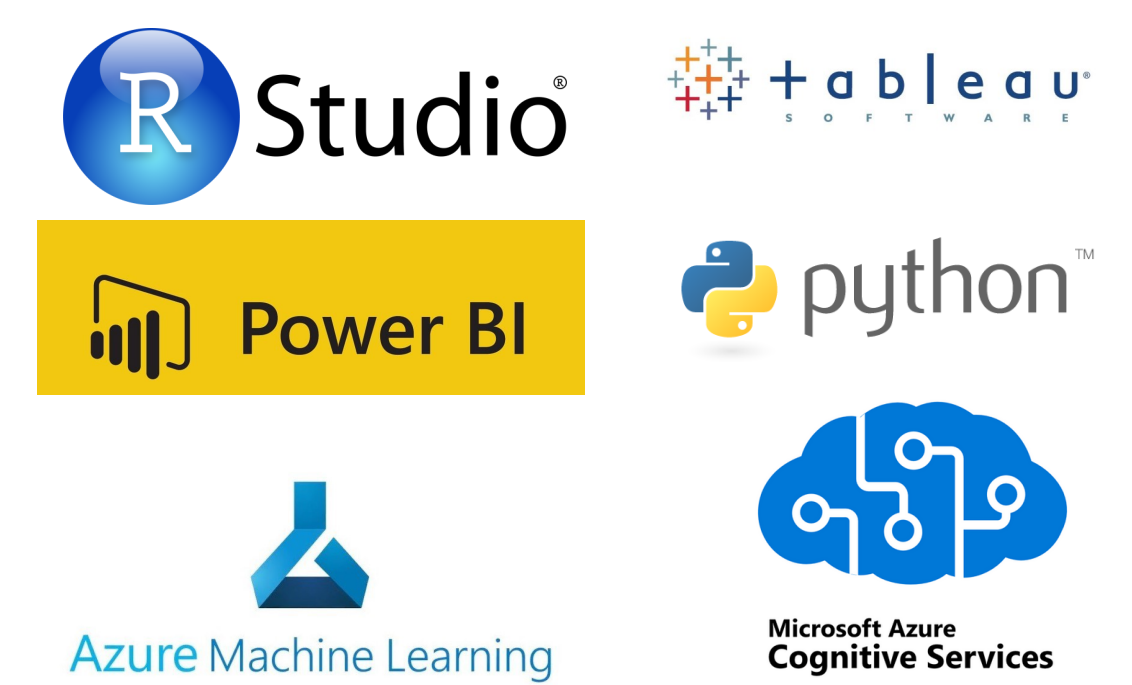
Project Objectives

- Assess telehealth utilization patterns in a post covid-19 environment
- Determine differences in adoption patterns by patient demographics, location, and practice setting
- Data-driven approach to identify treatments and procedures that are amenable to telehealth
- Identify opportunities to enable equitable access to care among socially vulnerable communities

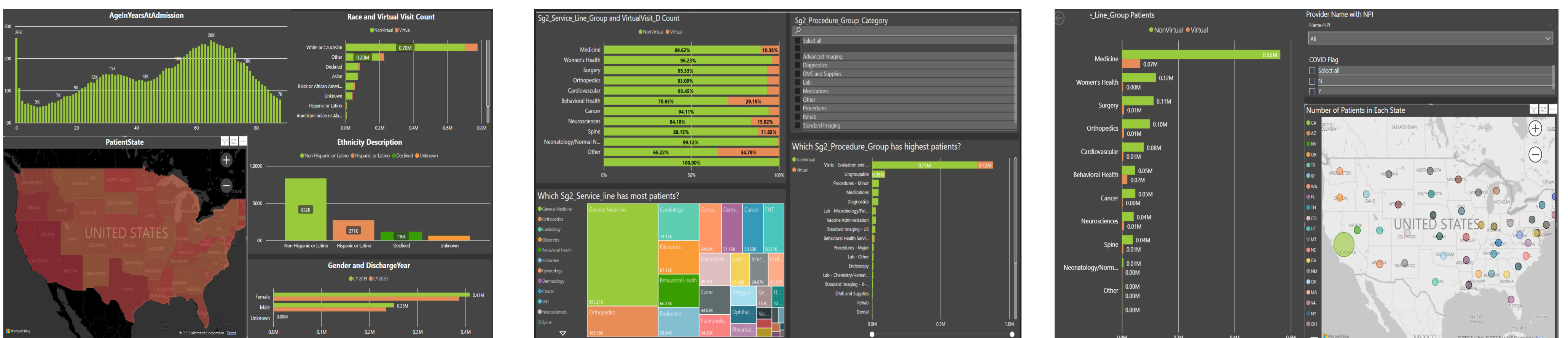
Data Architecture



Technologies Used



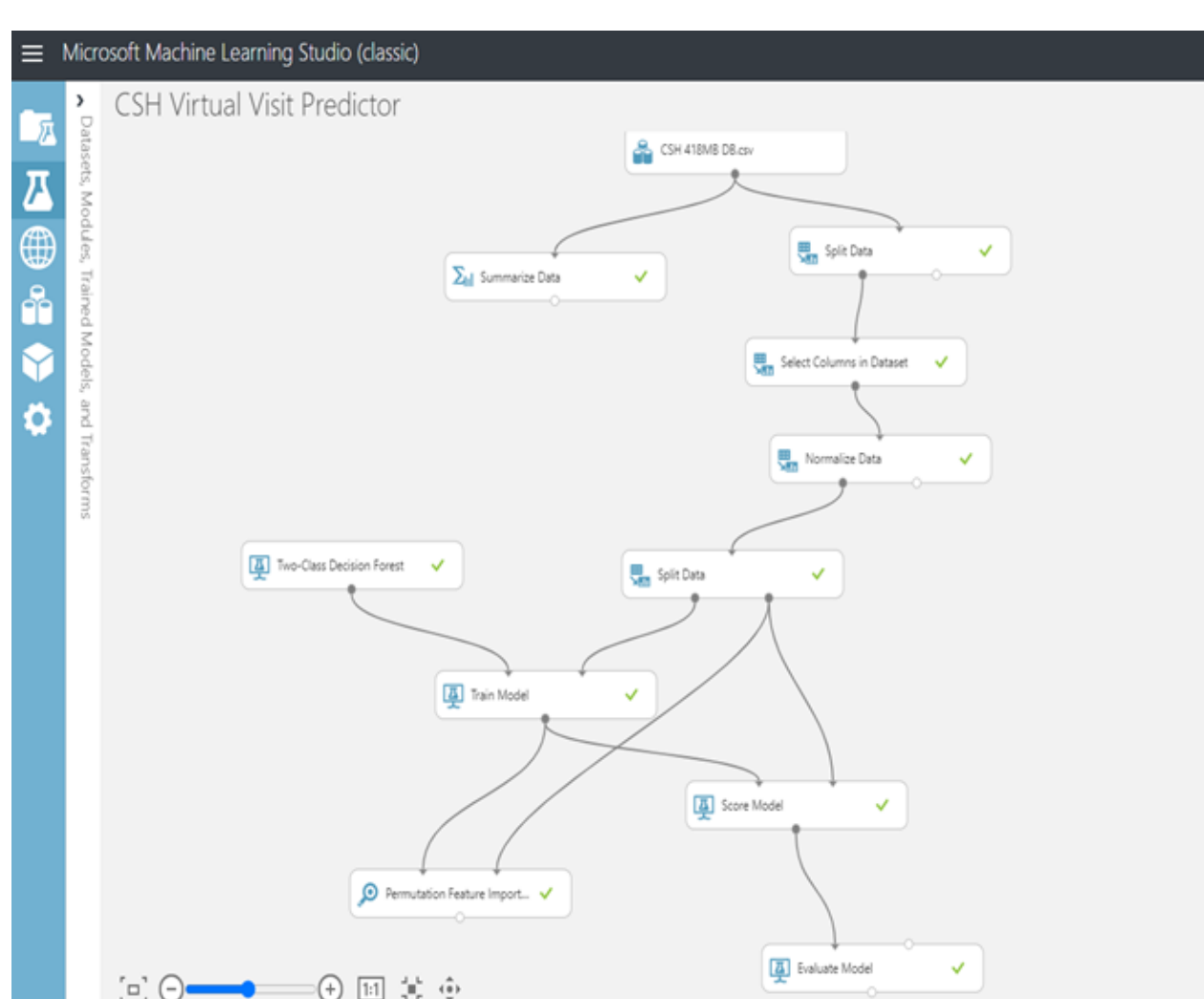
Interactive Dashboards



Key Insights and Findings

- Female > men in virtual visits
- Age group of 40-50 has the highest adoption of virtual health.
- Top 2 States : Vererrmont, New Hampshire.
- Bottom 2 States: Nebraska, Maine

Predictive Model and Evaluation



Accuracy: 72.87%

Confusion Matrix and Statistics	
Reference	Prediction
0	1
0 31098 8044	
1 19402 42617	
Accuracy : 0.7287	
95% CI : (0.7259, 0.7314)	
No Information Rate : 0.5008	
P-Value [Acc > NIR] : < 2.2e-16	
Kappa : 0.4572	
Mcnemar's Test P-Value : < 2.2e-16	
Precision : 0.6872	
Recall : 0.8412	
F1 : 0.7564	
Prevalence : 0.5008	
Detection Rate : 0.4213	
Detection Prevalence : 0.6131	
Balanced Accuracy : 0.7285	
'Positive' Class : 1	

Cognitive Analytics

