

# We Need Your Help

*Can new technologies for patients and their health care team*

- *Improve care*
- *Reduce symptoms*
- *Improve quality of life*



**Help us find out!**

**If you are receiving treatment at one of these clinics, you may be eligible to participate:**

- Fred Hutchinson Cancer Center
  - South Lake Union
  - UW Medical Center – Northwest
  - Peninsula
- MultiCare Regional Cancer Center
  - Tacoma
  - Gig Harbor



**SCOPE**

## Interested? Questions?

*Let your Social Worker know or contact us directly. We would love to hear from you!*

206-616-3032

[scopestudy@uw.edu](mailto:scopestudy@uw.edu)

[sites.uw.edu/scopestudy](https://sites.uw.edu/scopestudy)

MultiCare   
Regional Cancer Center

**W**  
UNIVERSITY of  
WASHINGTON

  
**Fred Hutch**  
Cancer Center

Research described in this brochure is funded by the **National Cancer Institute** (NCI-grant R01CA244171)



## Join Our SCOPE Study

*Supporting Collaborative Care to Optimize Psychosocial Engagement in the Cancer Setting*

Help us test new technologies to improve patient care and contribute to the well-being of cancer patients

# About SCOPE

## What is SCOPE?

**SCOPE is a research study testing new technologies to improve Collaborative Care.**

These technologies are intended to help patients and their Social Workers partner together to assist you through your unique cancer experience, share information, and manage and coordinate care.

## What is Collaborative Care?

**Collaborative Care is a team-based approach to caring for the whole you.**

It coordinates cancer treatment with treatment of other symptoms that often accompany a diagnosis of cancer, such as anxiety and low mood, loss of interest in usual activities, difficulties with sleep, low energy, and poor concentration.

Collaborative Care helps you better tolerate your cancer treatment and manage through this challenging period.

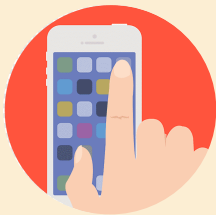
## How Can SCOPE Help?

Through SCOPE we will learn if these new technologies help **improve patient care, reduce distressing symptoms, and improve quality of life.** If these tools are helpful, we will make them widely available to people diagnosed with cancer.

# Your Involvement



Your participation would be up to 12 months. All participants will receive Collaborative Care. Half will also be randomly assigned (like flipping a coin) to receive the new technology tools.



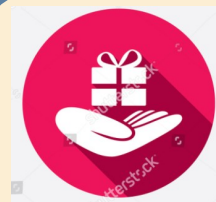
Participants who are assigned to the technology group will be provided an app to use on their phone, tablet or computer as often or as little as they like.



Participants are asked to complete a 15-30 minute survey at:

- Baseline (when you enroll)
- 3-months
- 6-months
- 9-months

These can be completed in person, by phone, through Zoom, on paper, or online.



After each survey, participants will be sent an e-gift card as a thank you. The total value of these gift cards is \$150.

# Meet Our Team



This study is conducted by researchers and staff at the University of Washington\*, Seattle Cancer Care Alliance, and MultiCare Regional Cancer Center

## Lead Investigator:

**Jesse Fann, MD, MPH**

Medical Director, Department of Psychosocial Oncology, Fred Hutchinson Cancer Center

Professor, Department of Psychiatry & Behavioral Sciences, University of Washington

## Research Coordinator:

**Lydia Andris, MPA**

## Research Assistant:

**Ben Zheng, MHS**

*\*UW Investigators include faculty from the Departments of Medical Oncology, Psychiatry & Behavioral Sciences, Human Centered Design & Engineering, and Computer Science & Engineering.*