

COLLABORATION | COMMUNITY | EQUITY, DIVERSITY AND ANTI-RACISM | MEANINGFUL POSITIVE IMPACT | INNOVATION | SHARED LEARNING

Artificial Intelligence in the Classroom: Reflections on Autumn Quarter 5 December 2023

SCHOOL OF PUBLIC HEALTH
UNIVERSITY *of* WASHINGTON



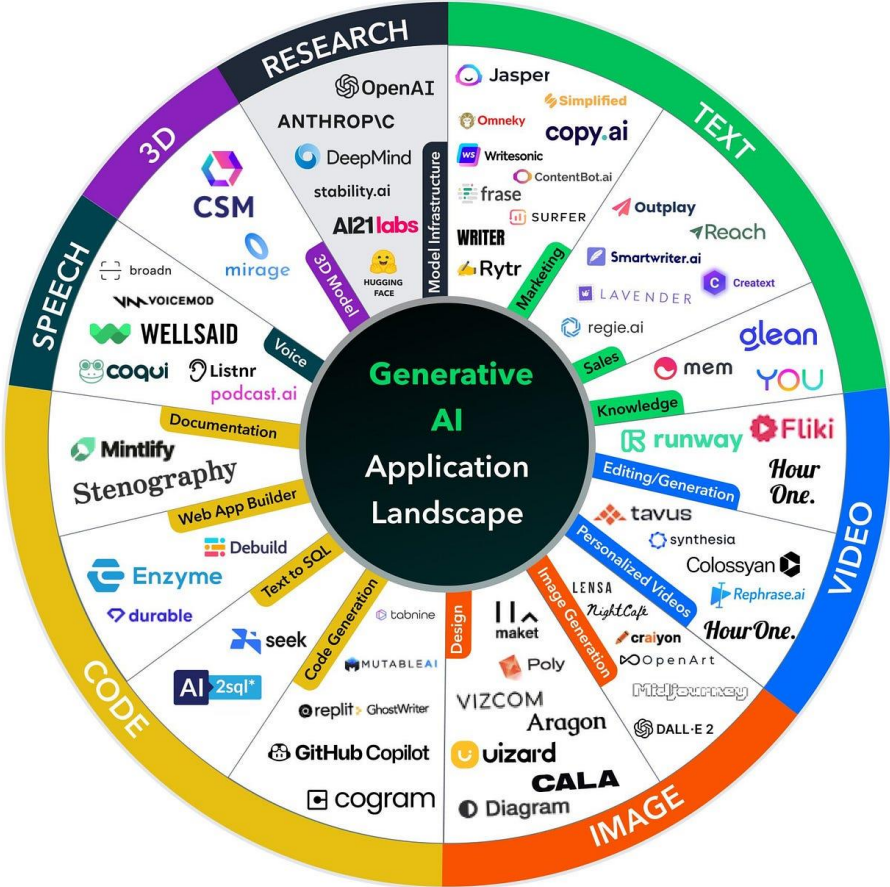
A year after ChatGPT's release, the AI revolution is just beginning



By [Catherine Thorbecke](#), CNN

🕒 8 minute read · Updated 10:32 AM EST, Thu November 30, 2023

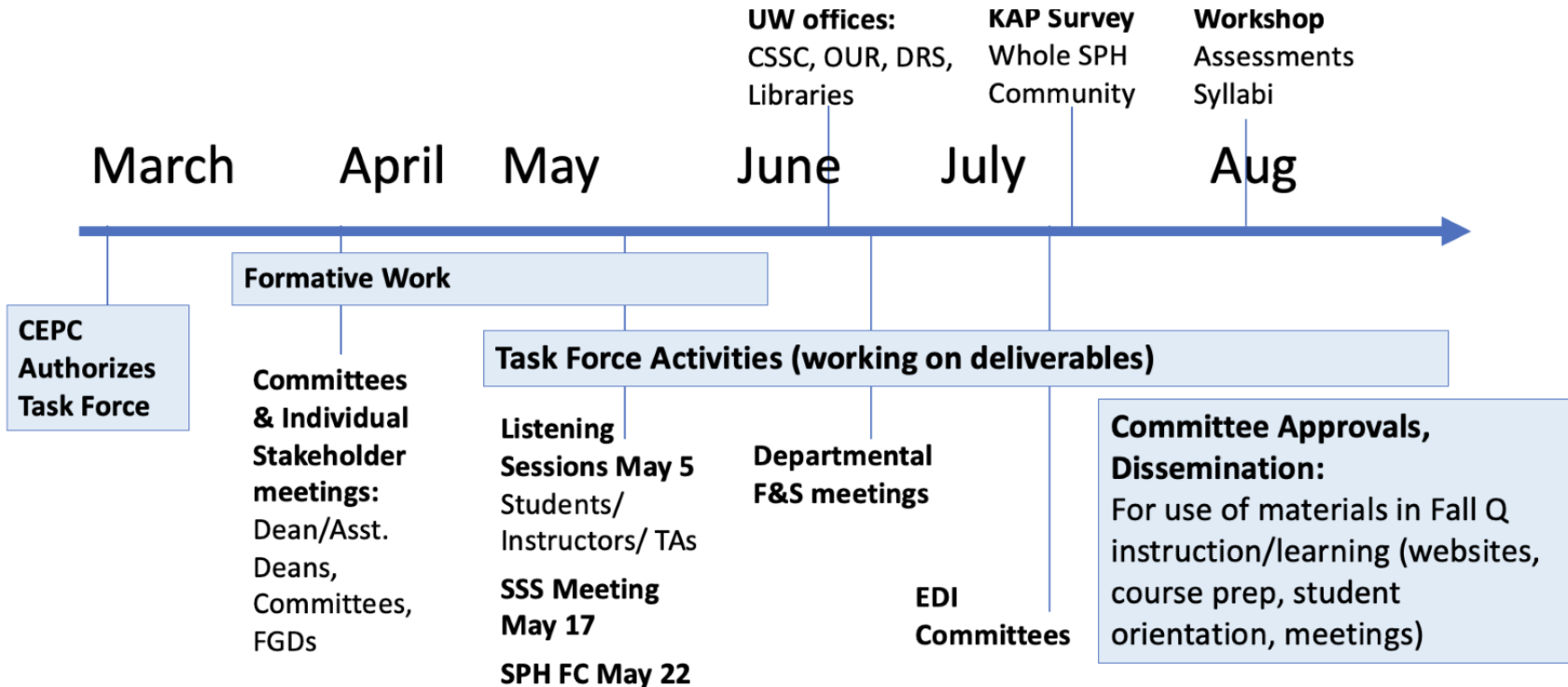
Tools for application to teaching and learning



<https://guides.libraries.emory.edu/AI/teaching>

<https://medium.com/@brandeismarshall/3-unsavory-consequences-of-generative-ai-2b9f5c29f52b>

TIMELINE OF SPH AI TASKFORCE



GUIDANCE PROVIDED FOR FALL QUARTER

Syllabus template and more at the
SPH Teaching Support website



GUIDANCE PROVIDED FOR FALL QUARTER

Academic Integrity

Students at the University of Washington (UW) are expected to maintain the highest standards of academic conduct, professional honesty, and personal integrity.

The UW School of Public Health (SPH) is committed to upholding standards of academic integrity consistent with the academic and professional communities of which it is a part.

Plagiarism, cheating, **unauthorized use of artificial intelligence (AI) tools**, and other misconduct are serious violations of the University of Washington Student Conduct Code (WAC 478-121).

We expect you to know and follow the university's policies on cheating and plagiarism, and the SPH Academic Integrity Policy. Any suspected cases of academic misconduct will be handled according to University of Washington regulations. For more information, see the University of Washington Community Standards and Student Conduct.



GUIDANCE PROVIDED FOR FALL QUARTER

Use of Generative Artificial Intelligence in Coursework

[Additional example syllabus language for allowing or not allowing AI use, as well as attribution instructions are provided here, and can be added as-is or modified and then added to your syllabus.]



USE OF GENERATIVE AI IN COURSEWORK

> We offered 9 template statements about use of AI

- 1. **"Do not use"** / Utah State University
- 2. **"Do not use"** / Colorado State University
- 3. **"Use only as directed"** / Utah State University
- 4. **"Use with permission"** / Utah State University
- 5. **"Use with permission"** / Colorado State University
- 6. **"Use with attribution"** / Bryant University
- 7. **"Use and disclose"** / Utah State University
- 8. **"Use with attribution"** / Bryant University
- 9. **"Abdication"** / Colorado State University



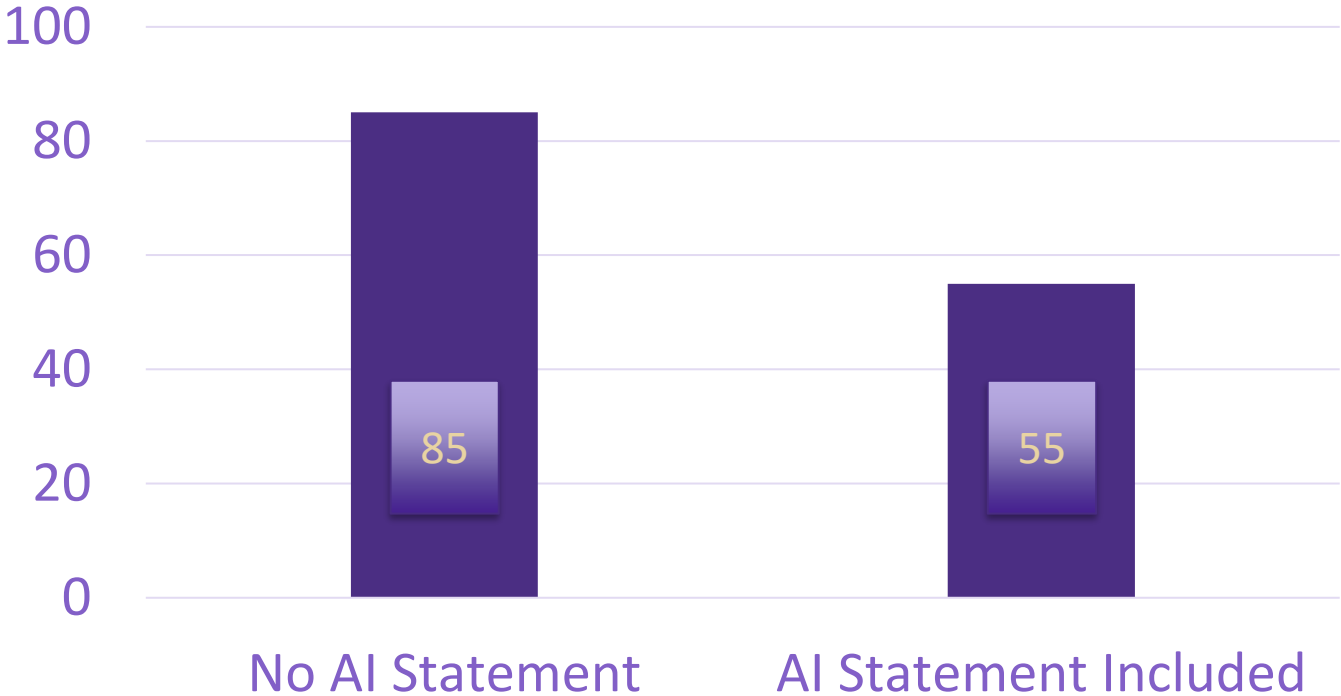
SYLLABUS HARVEST – AUTUMN QUARTER

> Total of 146 syllabi

- **13 BOST** (+ 2 cross-listed with other courses)
- **19 ENVH** (+ 1 cross-listed with other courses)
- **18 EPI** (+ 1 cross-listed with other courses)
- **14 G H** (+ 2 cross-listed with other courses)
- **11 HIHIM** (+ 1 cross-listed with other courses)
- **24 HSERV** (+ 2 cross-listed with other courses)
- **11 HSMGMT**
- **16 NUTR**
- **3 PABIO** (+ 1 cross-listed with other courses)
- **2 PHG**
- **7 PHI**
- **8 SPH**



Inclusion of AI Statement?



USE OF GENERATIVE AI IN COURSEWORK

> We offered 9 template statements about use of AI

{ – 1. "Do not use" / Utah State University
– 2. "Do not use" / Colorado State University } Do Not Use

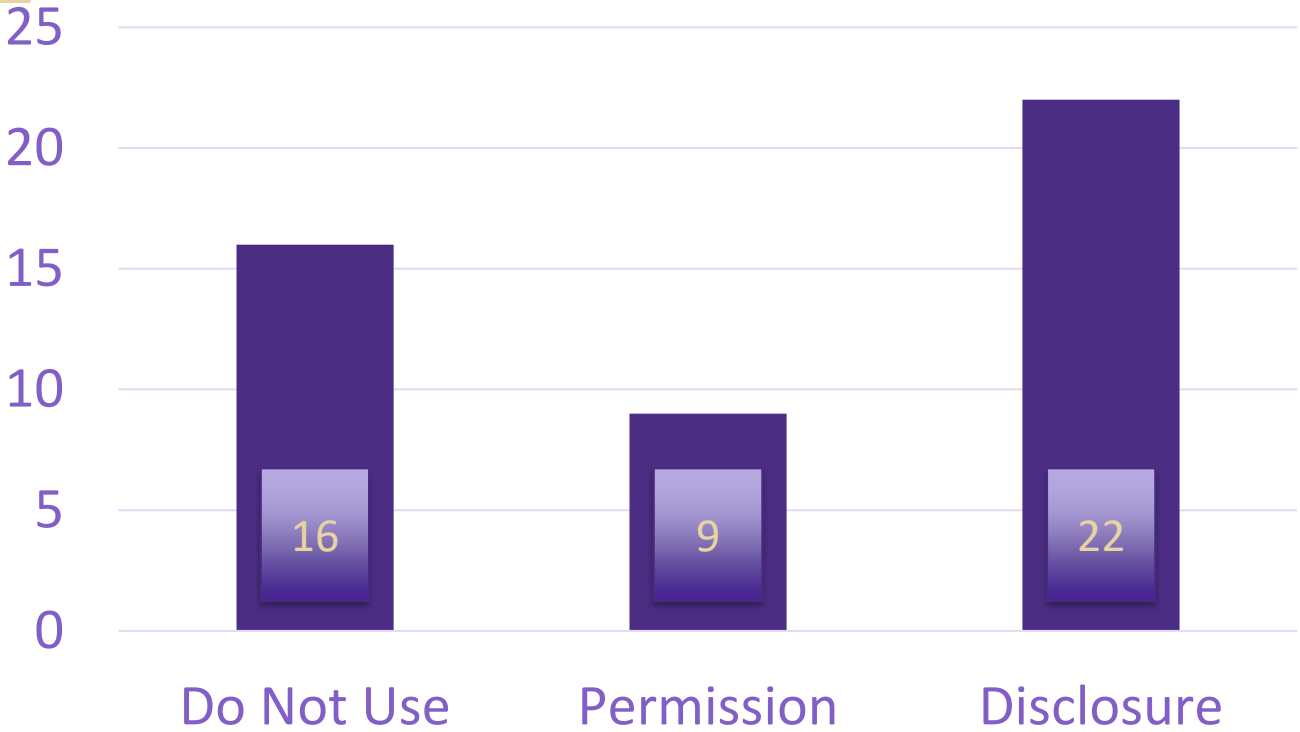
{ – 3. "Use only as directed" / Utah State University
– 4. "Use with permission" / Utah State University
– 5. "Use with permission" / Colorado State University } Permission

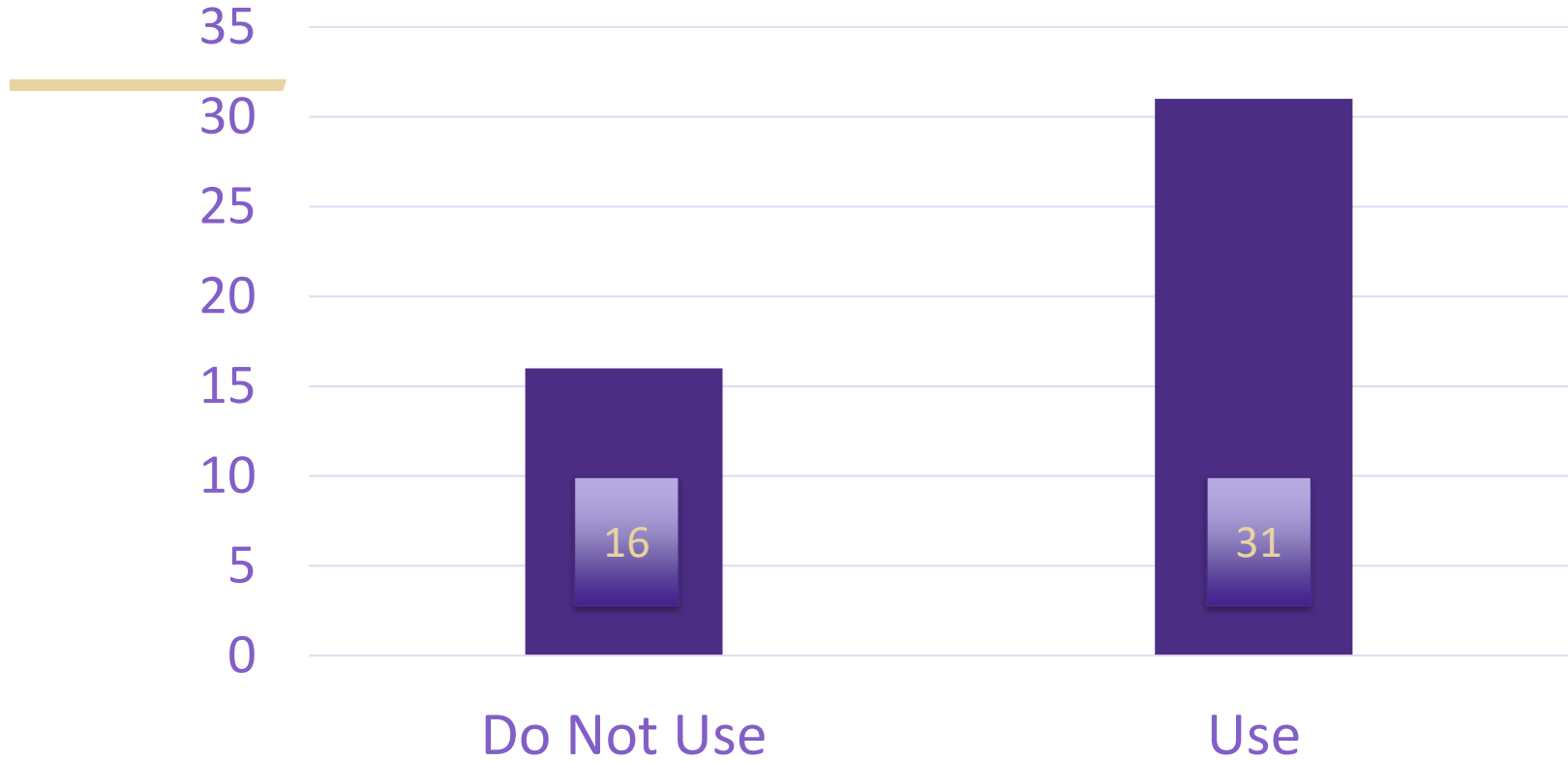
{ – 6. "Use with attribution" / Bryant University
– 7. "Use and disclose" / Utah State University
– 8. "Use with attribution" / Bryant University } Disclosure

{ – 9. "Abdication" / Colorado State University }



WHAT FACULTY CHOSE





Panel Discussion

- > **Please share title, affiliation, and classes taught**
- > **Briefly describe the approach you took with student use of AI in the classroom.**

